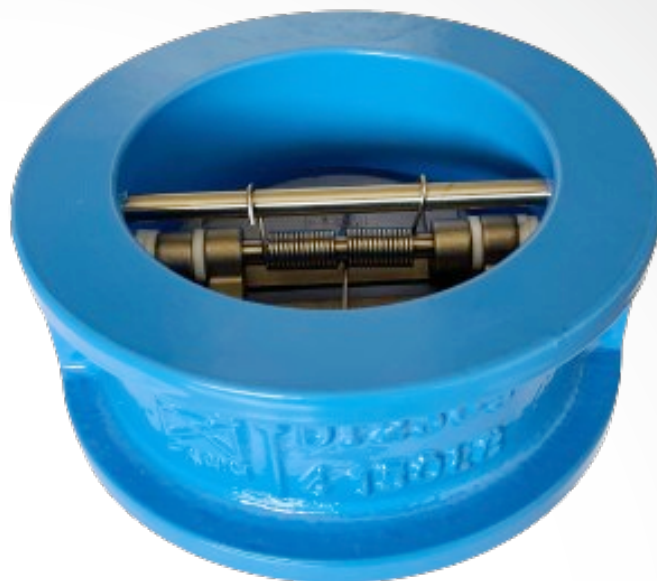




DUAL PLATE WAFER CHECK VALVE

Designed to outperform conventional valves, this compact marvel boasts a lightweight body, resulting in significant cost savings across purchasing, installation, and maintenance. Its unique design ensures silent operation without the disruptive slamming upon closure. The Dual Plate Wafer Check Valve sets a new standard in non-return valves, offering superior strength, reduced weight, and compact size. Its dual plate design, operated by torsion springs, ensures closure without relying on reverse flow, effectively eliminating water hammer and providing silent operation. Install vertically or horizontally for versatile application.



KEY FEATURES:

- ▶ Lightweight design for easier handling and self-supporting operation.
- ▶ Compact size allows for horizontal or vertical installation, offering versatility in application.
- ▶ Versatile seat options: choose between soft seats and Metal-Metal.
- ▶ Disc, coupled with springs, ensures an airtight seal for enhanced performance.
- ▶ Responsive springs facilitate swift closure.
- ▶ Shaft design prevents vibration, maintaining stability.
- ▶ Hermetic sealing achieved through a shaft and stop pin mounted on support, rather than through body holes.

DESIGN HIGHLIGHTS:

- ▶ Lightweight design for easier handling
- ▶ Complies with API 594 standards.
- ▶ End-to-end dimensions as per API 594.
- ▶ Flange dimensions in accordance with ASME B16.5 and ASME B16.47.
- ▶ Rigorously tested per API 598 for quality assurance.

SIZE:

- ▶ Range: 2" to 22"

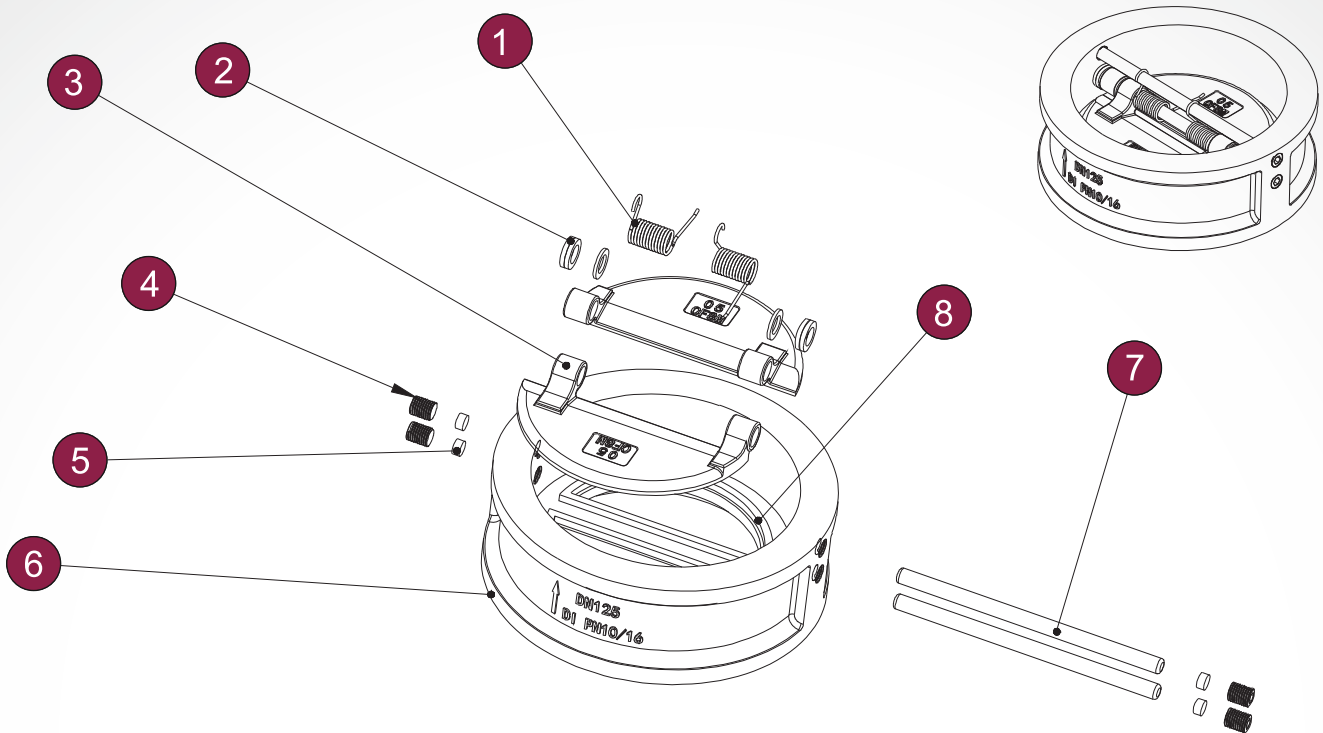
TESTING PRESSURE:

- ▶ Strength: 3.0 MPa
- ▶ Seal: 2.2 MPa

STANDARD:

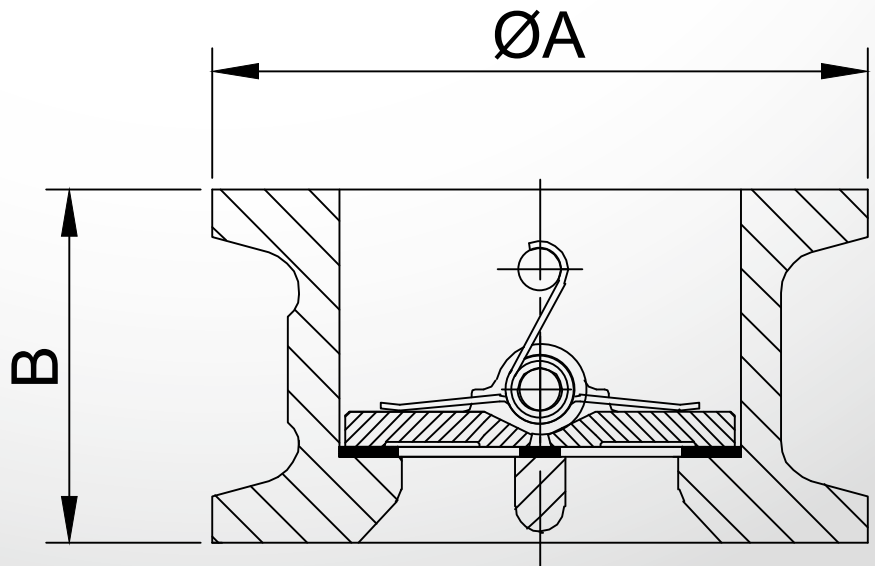
- ▶ Design Code: DIN 3356
- ▶ Inspection & Test: API 598
- ▶ End Standard:
ANSI B16.5 CLASS150
- ▶ Face to Face: ANSI B16.10

* All designs are subject to change without prior notice



Serial	Name	Material
1	Spring	SS304/SS316
2	Gasket	PTFE
3	Disc	CF8/CF8M/CU
4	Plug	SS
5	Rubber Plug	EPDM
6	Body	CI/DI
7	Stem	SS410/SS316/SS304
8	Seat	NBR/EPDM

SIZE	ØA±0.5 ANSI	B±0.5 ANSI
2"	102 -0.2 -0.8	60
2.5"	121 -0.2 -0.8	67
3"	134 -0.2 -0.8	73
4"	172 -0.2 -0.8	73
5"	194±1	83
6"	219±1	98
8"	276±1	127
10"	337±1	146
12"	407±1	181
14"	448±1	184
16"	511±1	191
18"	549±1	203
20"	606±1	213
24"	718±1	222



* All designs are subject to change without prior notice